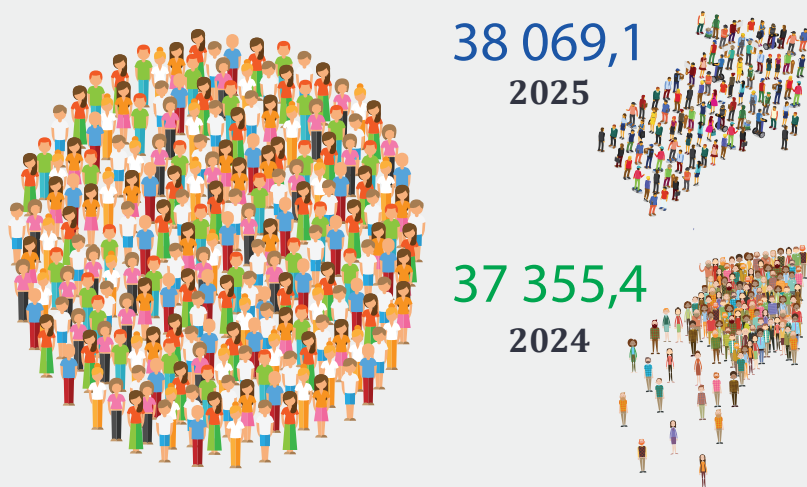


POPULATION

(as of October 1, thousand people)



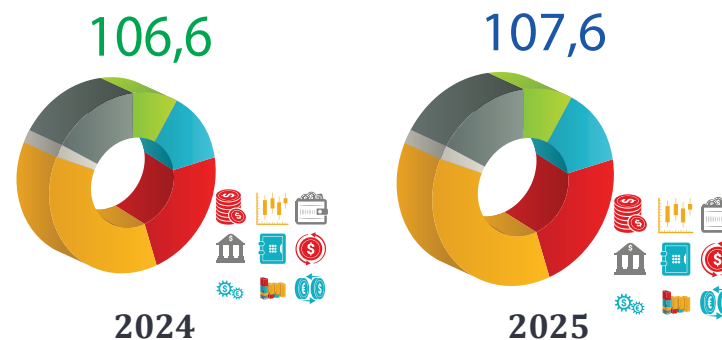
CONSUMER PRICE INDEX

(by December of the previous year, %)

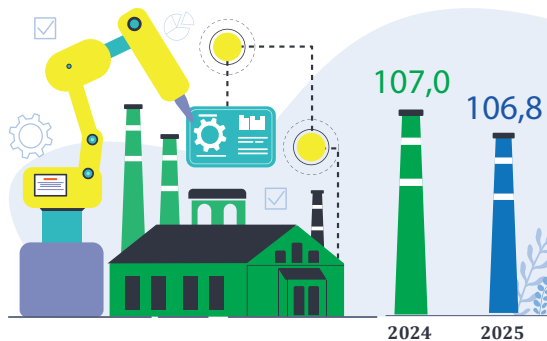


GROSS DOMESTIC PRODUCT GROWTH RATE

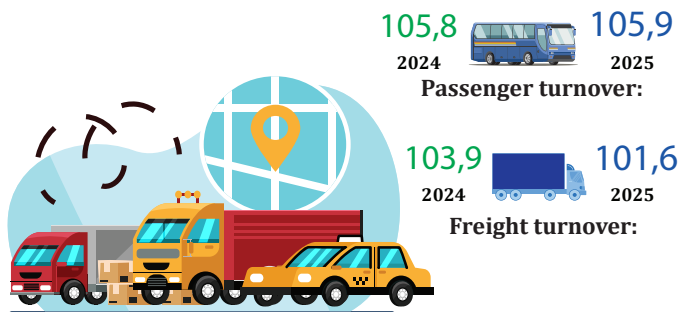
(the growth rate compared to the corresponding period of the previous year, %)



**INDEX OF PHYSICAL VOLUME
OF INDUSTRIAL PRODUCTION,**
(the growth rate compared to the same period, %)



TRANSPORT SPHERE GROWTH RATE,
(the growth rate compared to the same period, %)



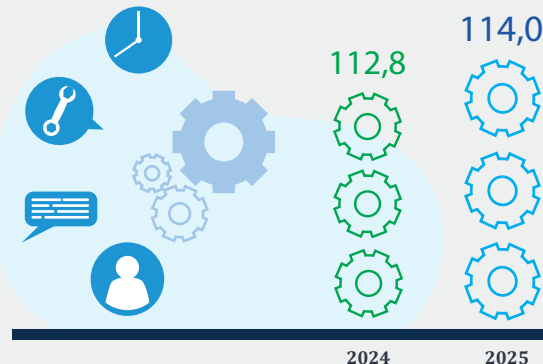
GROWTH RATE OF RETAIL TRADE TURNOVER,
(the growth rate compared to the same period, %)



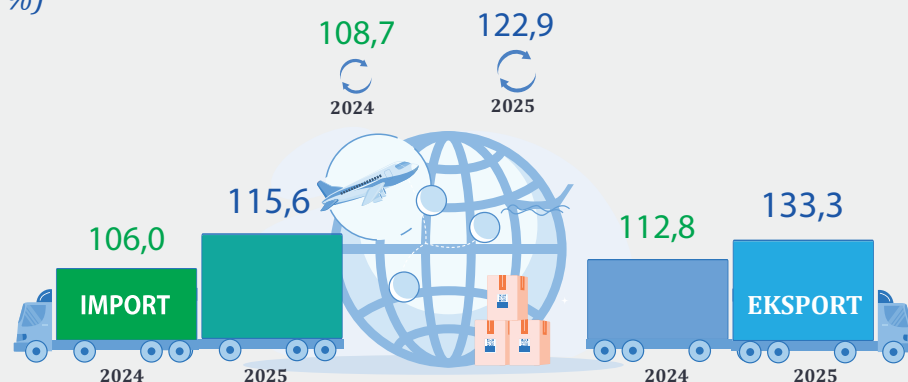
**GROWTH RATE OF THE VOLUME OF
CONSTRUCTION WORKS,**
(the growth rate compared to the same period, %)



**GROWTH RATE OF THE VOLUME
OF MARKET SERVICES,**
(the growth rate compared to the same period, %)

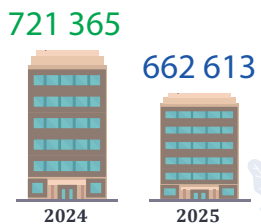


GROWTH RATE OF FOREIGN TRADE TURNOVER,
(the growth rate compared to the same period, %)



NUMBER OF ENTERPRISES AND ORGANIZATION
(excluding farms and dehkans, as of October 1, units)

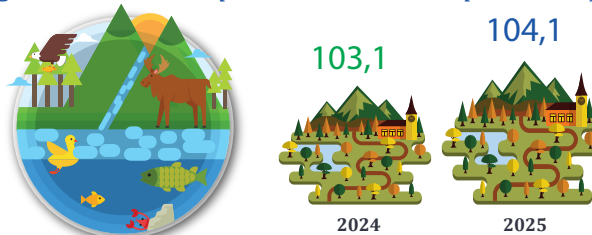
Registered:



Operating:



**GROWTH RATE OF AGRICULTURE,
FORESTRY AND FISHERIES**
(the growth rate compared to the same period, %)



**REAL GROWTH RATE OF TOTAL
INCOME OF THE POPULATION**
(the growth rate compared to the same period, %)

